



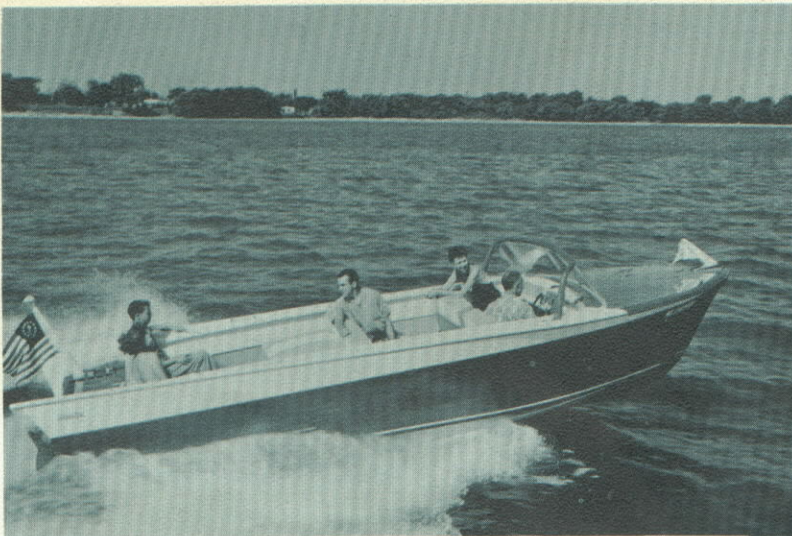
**Streblov**  
CUSTOM BOATS

## Creating new standards in the boating industry

STREBLOW COMMUTER 22 ft. INBOARD UTILITY	Check These Excellent Features	STREBLOW REBEL 19 ft. INBOARD UTILITY
STREBLOW 1961 Commuter is a high performance utility runabout sport boat with hydraform bottom for high efficiency, excellent maneuverability and easy riding.	<b>DESIGN</b>	STREBLOW 1961 Rebel is a high performance utility runabout sport boat with hydraform bottom for high efficiency, excellent maneuverability and easy riding.
Length—22'      Freeboard fore—35" Beam —7'10"      Freeboard aft —28" Draft                    —24"	<b>SPECIFICATIONS</b>	Length—19'      Freeboard fore—34" Beam —7'4"      Freeboard aft —28" Draft                    —22"
Framing —White Oak Bottom —Composite Construction Sides —Seam-batten planked Philippine Mahogany Deck —Planked Philippine Mahogany Fastenings—Non-ferrous	<b>CONSTRUCTION</b>	Framing —White Oak Bottom —Composite Construction Sides —Seam-batten planked Philippine Mahogany Deck —Planked Philippine Mahogany Fastenings—Non-ferrous
Varnished sides and deck with white hand striping and trim Bottom—Anti-fouling Bronze	<b>FINISH</b>	Varnished sides and deck with white hand striping and trim Bottom—Anti-fouling Bronze
See engine specifications	<b>POWER</b>	See engine specifications
9	<b>SEATING CAPACITY</b>	6
Two-tone (colors optional) with spring-filled cushions	<b>UPHOLSTERY</b>	Two-tone (colors optional) with spring-filled cushions
Chrome-plated Bow plate and bow light assembly Chrome-plated Stern deck plate and stern light assembly Chrome-plated Fin plates Windshield—safety glass with panoramic center Cleats & Chocks Step plates Automatic Bailer Fire Extinguisher                      Horns (under deck) Fender Hooks                              Battery—12 volt Lifting Rings                                Engine driven forced ventilation system Fuel Tank—32 gal. cap. terne plate	<b>EQUIPMENT</b>	STANDARD MODEL—Rebel. The only model with two-tone mahogany finish. Running lights                      Fuel Tank—32 gal. cap. terne plate Cleats & Chocks                      Horns—(under deck) Step plates                                Battery—12-volt Automatic Bailer                      Safety-glass Windshield with side vents. Fire Extinguisher Lifting Rings Fender Hooks DELUXE MODEL—Rebel, illustrated above. The above listed equipment plus: Chrome-plated Bow plate and bow light assembly Chrome-plated Stern deck plate and stern light assembly Chrome-plated Fin plates
Mechanical and electronic gauges	<b>INSTRUMENTS</b>	Mechanical and electronic gauges
Drag-link type with deluxe wheel (low gear ratio makes it as easy as power steering)	<b>STEERING</b>	Drag-link type with deluxe wheel (low gear ratio makes it as easy as power steering)
Morse throttle and reverse	<b>ENGINE CONTROLS</b>	Morse throttle and reverse.

## STREBLOW BOATS

Custom Cruisers from 23' to 29' inclusive.  
Designed for safety, speed and performance.  
Further information on request.



## streblov

### COMMUTER and REBEL

Years of research have developed the STREBLOW COMMUTER AND REBEL, designed and built by experienced boat designers and builders. Precise workmanship and ultra-styling are tested and proven.

The exclusive Streblov HYDRAFORM bottom design — commands DRY and EFFORTLESS Rocking Chair EASE at high speeds, and in rough water.

Super rich-red mahogany finish, varnished sides and deck with hand-stripped V white deck seams, race-hard anti-fouling bronze bottom paint.

A planked hull — ready and willing to take you anywhere and return you safely ashore in complete and secure comfort.

CREATED AND BUILT BY



2317 SPRINGBROOK ROAD  
KENOSHA, WISCONSIN

### *For Further Information*

REGARDING ENGINES  
WRITE VANGARD MARINE  
BOX 295  
BARRINGTON, ILLINOIS

#### ENGINE SPECIFICATIONS

TYPE—Valve in head—V-8—4 cycle—Vanguard Marine

BORE & STROKE— $3\frac{7}{8}$ " x 3"

PISTON DISPLACEMENT—283 cu. in.

APPROX. WEIGHT (Dry)—734 lbs.

COMPRESSION RATIO—Normal—8.0 : to 1  
Idle Speed—650 r.p.m.  
Oil Capacity—Approx. 5 qts.

FUEL SYSTEM—New fuel metering system. Meters fuel at each individual cylinder precisely according to engine requirements. Totally unaffected by engine angle or rough water conditions.

REVERSE GEAR—Hydraulic Paragon  
Lubricated with Type A Transmission oil—Approx. 2 qts. with cooler

GENERATOR CHARGE SYSTEM—12-volt—8 amp. Negative grounded regulator

HORSE POWER—(Observed at Drive Shaft)  
Natural Aspiration—250  
With forced ventilating—300